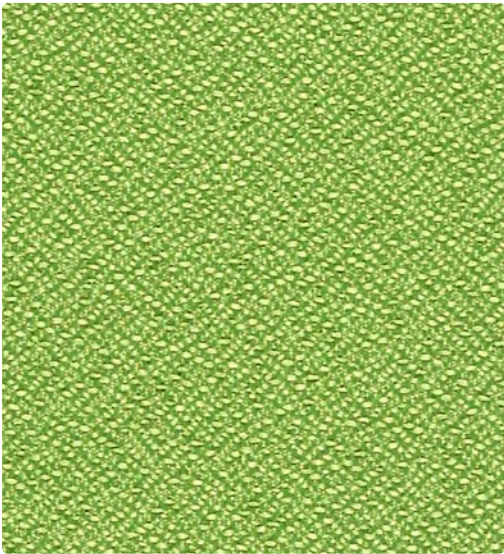


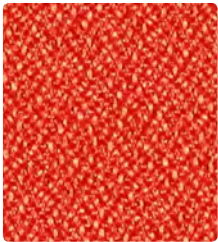
298-012  
Sunray



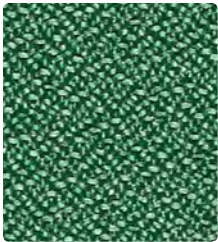
298-013  
Avocado



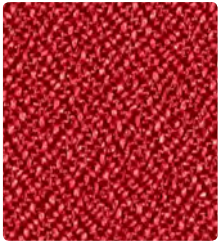
298-053  
Grass



298-009  
Pimento



298-043  
Hedge



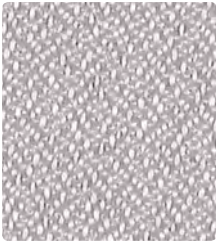
298-001  
Rouge



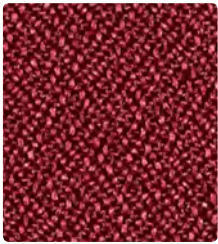
298-033  
Fairway



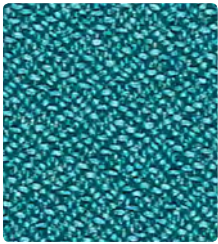
298-017  
Pumice



298-026  
Flint



298-011  
Port



298-044  
Peacock



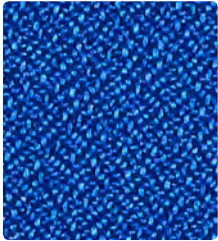
298-027  
Oatmeal



298-036  
Char



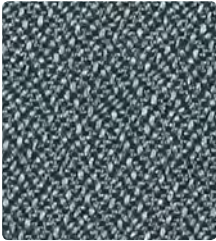
298-035  
Magenta



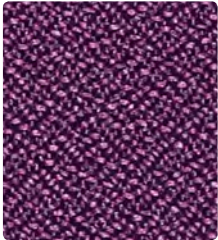
298-014  
Blue Ray



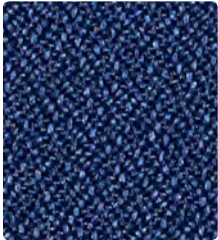
298-010  
Mocha



298-016  
Slate



298-025  
Grape



298-004  
Cadet



298-000  
Fudge



298-006  
Tuxedo

Application  
Upholstery Seating

Content  
100% Polyester

Width  
54 inches

Abrasion (Wyzenbeek/Cotton Duck)  
Passes 183,000 Double Rubs

Finish  
Stain Repellent

Reduced Environmental Impact  
GREENGUARD Gold Certified

TECHNICAL INFORMATION

Content: 100% Polyester	Weight: 12.10 oz./linear yard	
Width: 54"	Finish: Stain Repellent	
Backing: Acrylic	Directional: No	Railroaded: No
Approx. Repeat: None		

PERFORMANCE

Surface Abrasion: Heavy Duty ASTM D 4157 (Wyzenbeek/Cotton Duck)	<b>Results</b> Passes 183,000 Double Rubs Multiple factors affect fabric durability and appearance retention, including end-user application and proper maintenance. Wyzenbeek results above 100,000 double rubs have not been shown to be a reliable indicator of increased fabric lifespan.
Pilling Resistance ASTM D 3511	Class 5
Colorfastness to Crocking AATCC-8	Dry: Class 4 min / Wet: Class 4
Colorfastness to Light AATCC 16	Class 5 at 40 hours

FLAMMABILITY

California Technical Bulletin 117-2013  
NFPA 260/UFAC Class 1  
ASTM E84 (Adhered) Class 2 or B  
May comply with California Technical Bulletin 133 when combined with appropriate components.

REDUCED ENVIRONMENTAL IMPACT

This product is GREENGUARD Gold Certified for low chemical and particle emissions to UL standard UL 2818 and may contribute to LEED certification. For complete information visit [mayerfabrics.com](http://mayerfabrics.com) and [UL.com/gg](http://UL.com/gg).

CLEANING INFORMATION

WS: Water/Solvent Cleaner

ADDITIONAL INFORMATION

**Custom Capabilities:** All patterns can be custom colored. Minimum yardage applies.  
**Digital Swatch Card Color Matching:** Due to color variations on different monitors and color printers, actual swatch colors may vary slightly. Please request a memo sample from Mayer Fabrics to ensure proper color representation.  
**Specifications:** Specifications are correct at the time of printing. Current specifications are available on our website.



This fabric meets or exceeds these ACT performance guidelines.  
\*Certification Marks owned by ACT®



Water and Stain Repellent Finish



This 100% polyester fabric is included in the Underwriter's Laboratory Fabric Recognition Program. Additional testing of this U.L. recognized component is not required on approved panels from participating manufacturers.

